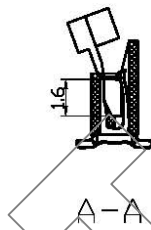
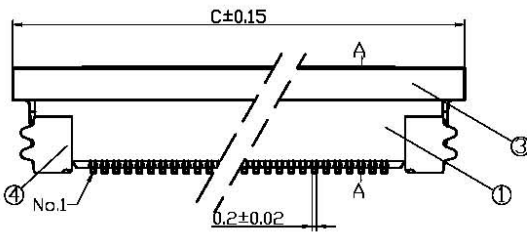
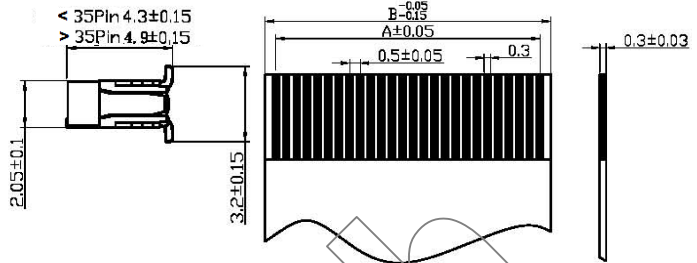
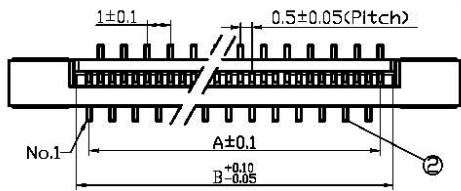


FPC0.5B-P-SMT-XP; PITCH 0.5mm ZIF FFC/FPC Conn. SMT Vertical P Type (H = 4.3/4.9mm)

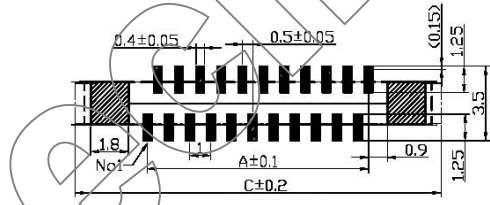
SPECIFICATIONS

Pitch: 0.5 mm
 Current Rating: 0.5A, AC, DC
 Voltage Rating: 50V, AC, DC
 Dielectric Withstanding: 500V AC/minute
 Insulator Resistance: $\geq 500 \text{ M}\Omega$ at 100V
 Contact Resistance: $\leq 30 \text{ m}\Omega/\text{Contact}$
 Operating Temperature: $-25^\circ\text{C} \sim +85^\circ\text{C}$
 Applicable FFC/FPC: $0.3\text{mm} \pm 0.03\text{mm}$
 Material:
 Base: Nylon6T/LCP, UL94V-0
 Latch: PPS, UL94V-0
 Contact Pin: Copper Alloy
 Contact Plating: Au or Sn Over $50\mu\text{'' Ni}$

ROHS Compliance



Recommended Applicable FPC/FFC



Recommended PCB Layout

Circuit	Dimensions (mm)			Circuit	Dimensions (mm)			Circuit	Dimensions (mm)		
	A	B	C		A	B	C		A	B	C
4	1.5	2.6	8.4	23	11.0	12.1	17.9	42	20.5	21.6	27.4
5	2.0	3.1	8.9	24	11.5	12.6	18.4	43	21.0	22.1	27.9
6	2.5	3.6	9.4	25	12.0	13.1	18.9	44	21.5	22.6	28.4
7	3.0	4.1	9.9	26	12.5	13.6	19.4	45	22.0	23.1	28.9
8	3.5	4.6	10.4	27	13.0	14.1	19.9	46	22.5	23.6	29.4
9	4.0	5.1	10.9	28	13.5	14.6	20.4	47	23.0	24.1	29.9
10	4.5	5.6	11.4	29	14.0	15.1	20.9	48	23.5	24.6	30.4
11	5.0	6.1	11.9	30	14.5	15.6	21.4	49	24.0	25.1	30.9
12	5.5	6.6	12.4	31	15.0	16.1	21.9	50	24.5	25.6	31.4
13	6.0	7.1	12.9	32	15.5	16.6	22.4	51	25.0	26.1	31.9
14	6.5	7.6	13.4	33	16.0	17.1	22.9	52	25.5	26.6	32.4
15	7.0	8.1	13.9	34	16.5	17.6	23.4	53	26.0	27.1	32.9
16	7.5	8.6	14.4	35	17.0	18.1	23.9	54	26.5	27.6	33.4
17	8.0	9.1	14.9	36	17.5	18.6	24.4	55	27.0	28.1	33.9
18	8.5	9.6	15.4	37	18.0	19.1	24.9	56	27.5	28.6	34.4
19	9.0	10.1	15.9	38	18.5	19.6	25.4	57	28.0	29.1	34.9
20	9.5	10.6	16.4	39	19.0	20.1	25.9	58	28.5	29.6	35.4
21	10.0	11.1	16.9	40	19.5	20.6	26.4	59	29.0	30.1	35.9
22	10.5	11.6	17.4	41	20.0	21.1	26.9	60	29.5	30.6	36.4