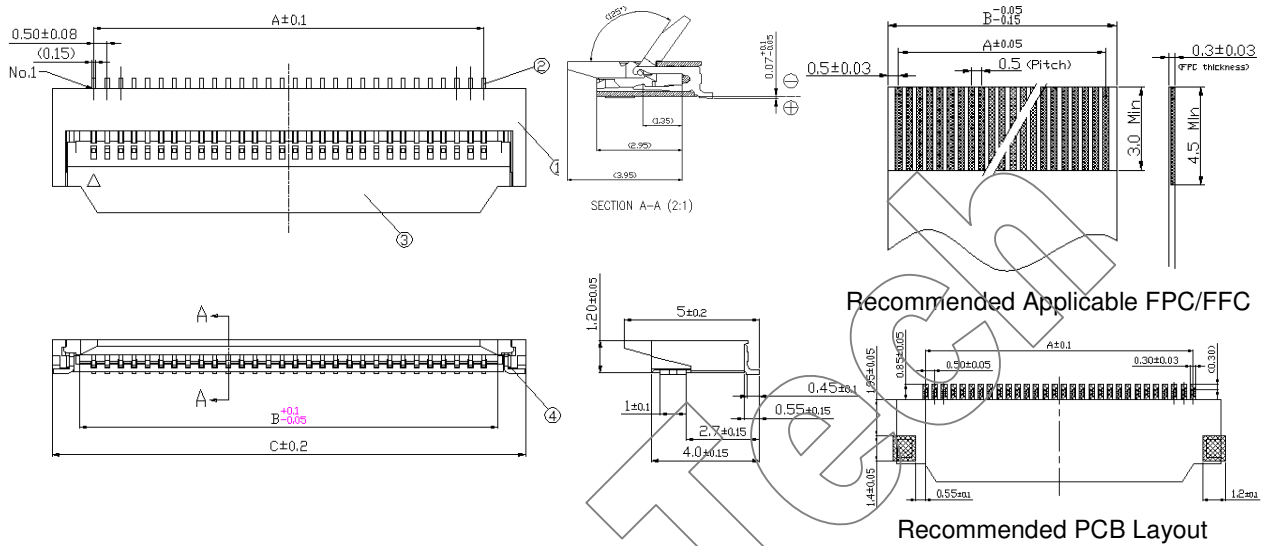


**FPC0.5F2-B-SMT-XPW: PITCH 0.5mm ZIF FFC/FPC CONN. SMT R/A Flip-Lock Type (H = 1.2mm)**

**SPECIFICATIONS**

Pitch: 0.5 mm  
 Current Rating: 0.5A, AC, DC  
 Voltage Rating: 50V, AC, DC  
 Dielectric Withstanding: 500V AC/minute  
 Insulator Resistance: ≥ 500 MΩ at 100V  
 Contact Resistance: ≤ 30 mΩ/Contact  
 Operating Temperature: -25°C ~ +85°C  
 Applicable FFC/FPC: 0.3mm ± 0.03mm  
 Material:  
 Base: Nylon6T/LCP, UL94V-0  
 Contact Pin: Copper Alloy  
 Contact Plating: Au or Sn Over 50u" Ni

**ROHS Compliance**



Recommended Applicable FPC/FFC

Recommended PCB Layout

Circuit	Dimensions (mm)			Circuit	Dimensions (mm)			Circuit	Dimensions (mm)		
	A	B	C		A	B	C		A	B	C
4	1.5	2.6	4.6	23	11.0	12.1	14.1	42	20.5	21.6	23.6
5	2.0	3.1	5.1	24	11.5	12.6	14.6	43	21.0	22.1	24.1
6	2.5	3.6	5.6	25	12.0	13.1	15.1	44	21.5	22.6	24.6
7	3.0	4.1	6.1	26	12.5	13.6	15.6	45	22.0	23.1	25.1
8	3.5	4.6	6.6	27	13.0	14.1	16.1	46	22.5	23.6	25.6
9	4.0	5.1	7.1	28	13.5	14.6	16.6	47	23.0	24.1	26.1
10	4.5	5.6	7.6	29	14.0	15.1	17.1	48	23.5	24.6	26.6
11	5.0	6.1	8.1	30	14.5	15.6	17.6	49	24.0	25.1	27.1
12	5.5	6.6	8.6	31	15.0	16.1	18.1	50	24.5	25.6	27.6
13	6.0	7.1	9.1	32	15.5	16.6	18.6	51	25.0	26.1	28.1
14	6.5	7.6	9.6	33	16.0	17.1	19.1	52	25.5	26.6	28.6
15	7.0	8.1	10.1	34	16.5	17.6	19.6	53	26.0	27.1	29.1
16	7.5	8.6	10.6	35	17.0	18.1	20.1	54	26.5	27.6	29.6
17	8.0	9.1	11.1	36	17.5	18.6	20.6	55	27.0	28.1	30.1
18	8.5	9.6	11.6	37	18.0	19.1	21.1	56	27.5	28.6	30.6
19	9.0	10.1	12.1	38	18.5	19.6	21.6	57	28.0	29.1	31.1
20	9.5	10.6	12.6	39	19.0	20.1	22.1	58	28.5	29.6	31.6
21	10.0	11.1	13.1	40	19.5	20.6	22.6	59	29.0	30.1	32.1
22	10.5	11.6	13.6	41	20.0	21.1	23.1	60	29.5	30.6	32.6